

**PLANS FOR THE
GULF COAST RV PARK
PAVEMENT REPAIR**

JEFFERSON COUNTY, TEXAS

COUNTY COMMISSIONERS

JEFF BRANICK

COUNTY JUDGE

EDDIE ARNOLD

PRECINCT NO. 1

BRENT WEAVER

PRECINCT NO. 2

MICHAEL SINEGAL

PRECINCT NO. 3

EVERETTE ALFRED

PRECINCT NO. 4

PREPARED BY:

JEFFERSON COUNTY
ENGINEERING DEPARTMENT

MAY 2014

ESTIMATE SUMMARY SHEET

| ITEM | CODE | SPL | | DESCRIPTION | UNIT | TOTAL QUANTITY |
|-------------|------|-----|--|-----------------------------|------|----------------|
| 104 | 2001 | | | REMOVING CONC (PAV) | SY | 916.00 |
| 360 | 2023 | | | CONC PAV (JOINT REINF) (6") | SY | 916.00 |
| Add. Alt. 1 | | | | | | |
| 104 | 2001 | | | REMOVING CONC (PAV) | SY | 331.00 |
| 360 | 2023 | | | CONC PAV (JOINT REINF) (6") | SY | 331.00 |
| Add. Alt. 2 | | | | | | |
| 104 | 2001 | | | REMOVING CONC (PAV) | SY | 97.00 |
| 360 | 2023 | | | CONC PAV (JOINT REINF) (6") | SY | 97.00 |
| Add. Alt. 3 | | | | | | |
| 104 | 2001 | | | REMOVING CONC (PAV) | SY | 65.20 |
| 360 | 2023 | | | CONC PAV (JOINT REINF) (6") | SY | 65.20 |
| Add. Alt. 4 | | | | | | |
| 104 | 2001 | | | REMOVING CONC (PAV) | SY | 55.00 |
| 360 | 2023 | | | CONC PAV (JOINT REINF) (6") | SY | 55.00 |

General Notes:

Provide a Contractor's Responsible Person and a phone number for emergency contact.

Contractor shall assume ownership for all designated waste material and dispose of it as approved by the engineer.

The base bid includes removing the existing concrete and reconstructing the pavement in areas 1, 2, 6, 7, 8, and 9 as shown on the project layout.

Additive alternate 1 bid includes removing the existing concrete and reconstructing the pavement in area 3 as shown on the project layout.

Additive alternate 2 bid includes removing the existing concrete and reconstructing the pavement in area 4 as shown on the project layout.

Additive alternate 3 bid includes removing the existing concrete and reconstructing the pavement in area 5 as shown on the project layout.

Additive alternate 4 bid includes removing the existing concrete and reconstructing the pavement in small spot locations within areas 3 and 4 as shown on the project layout.

Item 6: Control of Materials

The Contractor will be responsible for all testing or having testing performed by an acceptable testing company. Consider this work to be subsidiary to the various bid items of the contract.

Item 360: Concrete Pavement

Construction joints may be formed by the use of metal or wood forms equal in depth to the nominal depth of the pavement, or by other means which have been approved by the engineer prior to their use.

Longitudinal and transverse bars shall be of steel conforming to ASTM designations: A-615 or A-616 (Grade 60) as noted in the specifications. The size and spacing shall be #3 bars at 12" on center each way.

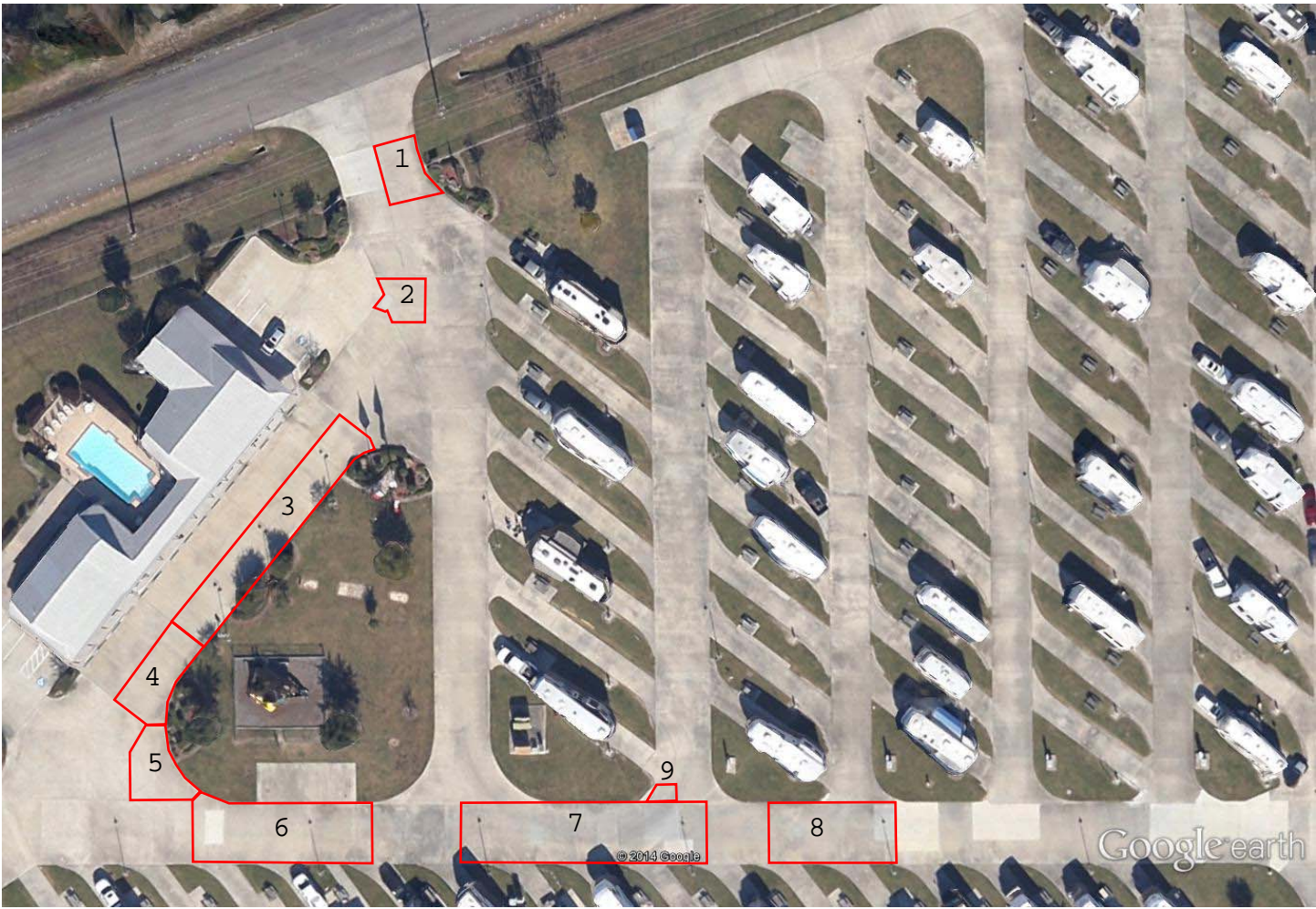
It is the intent of this design that the longitudinal steel be at the center of the slab. It shall be the responsibility of the contractor to take all necessary precautions to ensure that the final position of the steel is within ½ inch of the slab center.

Any approved chair type of design, which will satisfy the requirements noted hereon, will be permitted. Chair spacings shall not be greater than 60" c-c measured parallel to the

pavement centerline and 30" c-c measured perpendicular to the pavement centerline. Additional chairs shall be used if necessary to meet the steel placement requirement.

Longitudinal and transverse steel spacing shall not vary more than one inch from the spacing shown hereon.

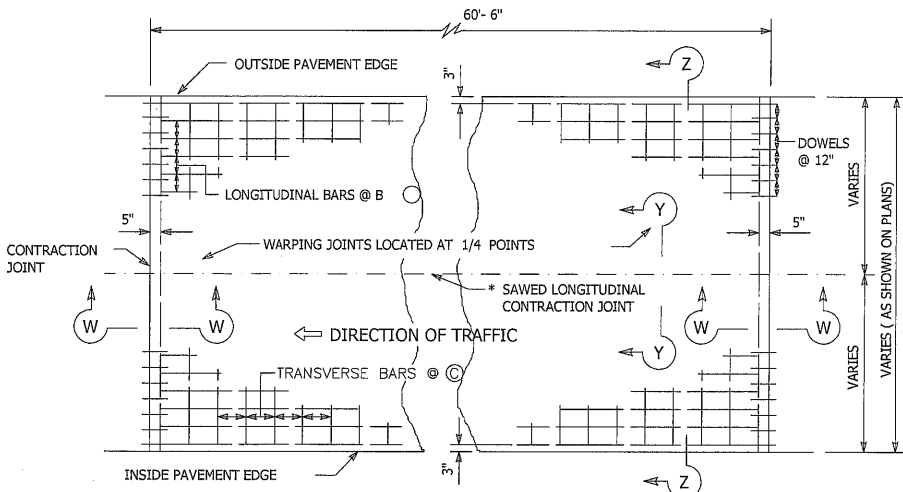
All joints shall be sealed with Class 5 self-leveling low-modulus silicone sealant as approved by the engineer.



Google earth

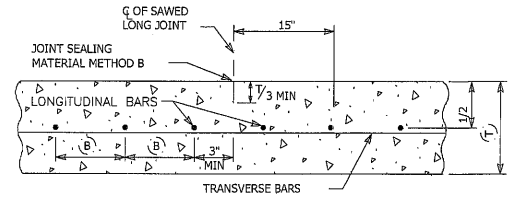
feet
meters





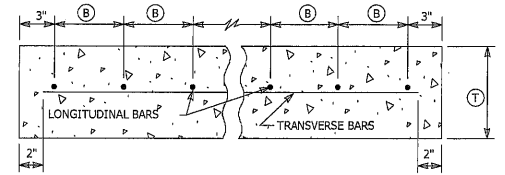
PAVEMENT PLAN
(AS SHOWN ON DRAWING)

*SAWED LONGITUDINAL CONTRACTION JOINT, REQUIRED WHEN PLACEMENT WIDTH EXCEEDS 14'-6". (NORMALLY LOCATED AT CENTER OF PLACEMENT UNLESS OTHERWISE DIRECTED BY THE ENGINEER.)



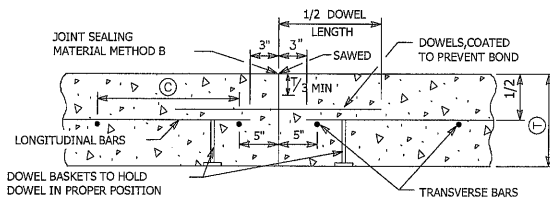
GROOVED LONGITUDINAL JOINT

SECTION Y-Y



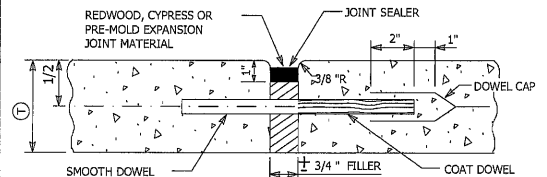
TYPICAL SECTION

SECTION Z-Z



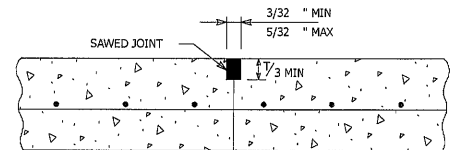
CONTRACTION JOINT

SECTION W-W



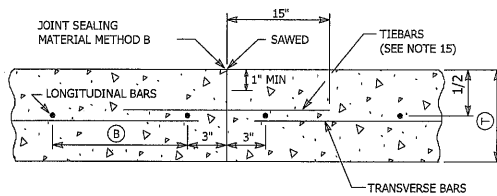
EXPANSION JOINT

(LOCATIONS AS SHOWN IN THE PLANS)



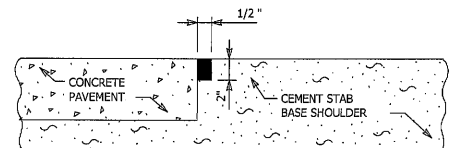
WARPING JOINT

(USUAL SPACING 15'-1 1/2")



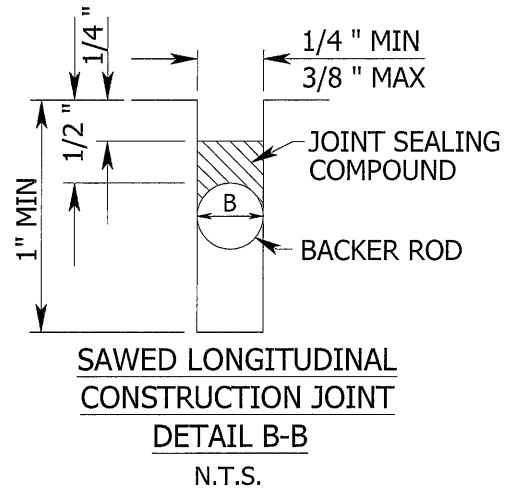
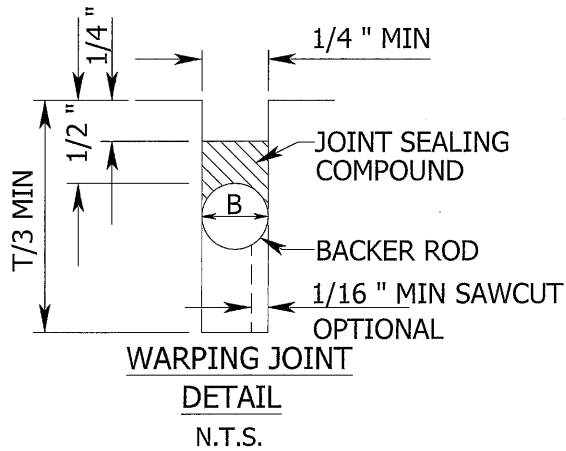
LONGITUDINAL CONTRACTION JOINT

SECTION Y-Y



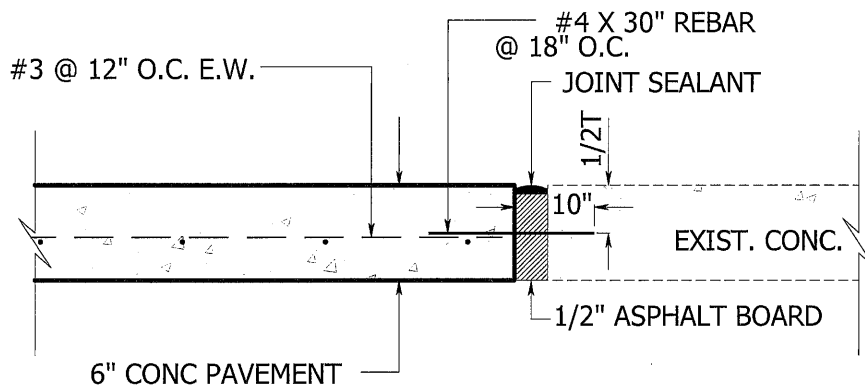
EDGE SEALING DETAIL

TYPICAL PAVEMENT DETAILS



NOTE:

ALL JOINTS TO BE FILLED WITH CLASS 5
SELF-LEVELING LOW-MODULUS SILICONE
SEALANT AS APPROVED BY THE ENGINEER.
BACKER ROD DIM (B) = 1/8" LARGER THAN
JOINT WIDTH.



TYPICAL PAVEMENT DETAILS